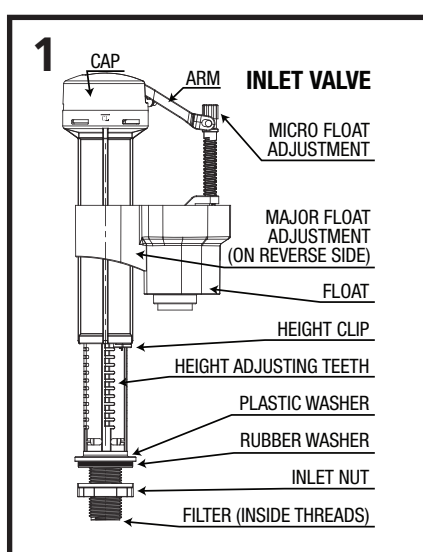


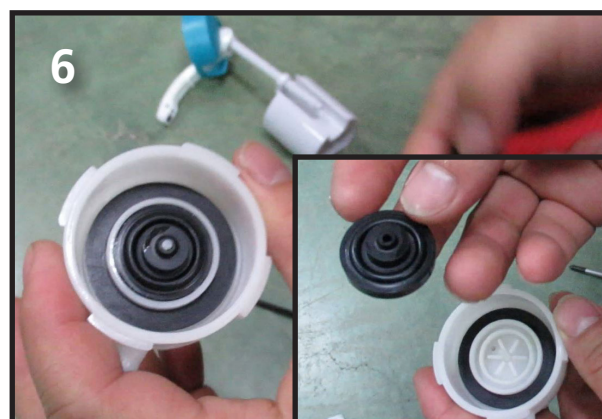
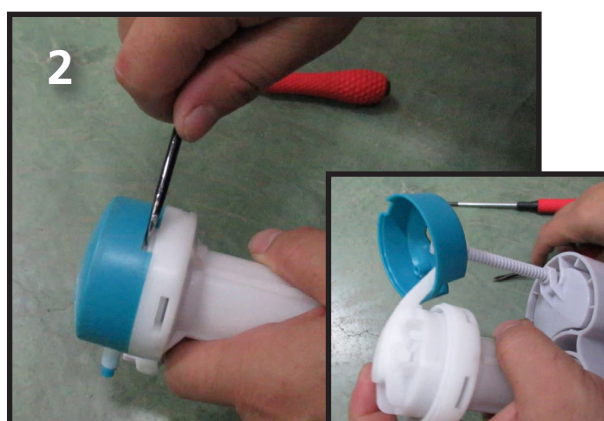
TRAFALGAR HEADSEAL

INSTALLATION INSTRUCTIONS

1. Turn off water supply and flush cistern until empty. Place a bucket under the inlet valve as some water may remain in the tank. Remove the inlet valve from the tank by unscrewing the water connector and the inlet nut.
2. Remove the blue cap from the top of the inlet valve, using a flathead screwdriver to lever it off. The blue cap should flip back onto the arm.
3. Remove the small L shaped rod that is located through the centre of the lid.



4. Remove the float arm from the inlet valve body.
5. Insert a narrow screwdriver through the two holes on the lid of the valve. This can be used as a lever to twist the lid anti-clockwise to open.
6. On the reverse of this lid, you will find the rubber headseal washer which can be removed and replaced.
7. Reassemble valve, reinstall, and turn on water supply. Check for leaks.



FIX-A-TAP®
AUSTRALIA PTY LTD
The Ultimate Plumbing Solution
PO Box 200 Wahroonga
NSW Australia 2076
www.fixatap.com.au