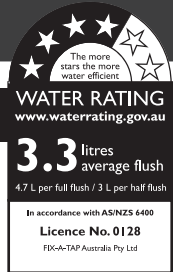


FIX-A-LOO®

ELDON CISTERN

IMPORTANT INFORMATION



We recommend installation by a licensed plumber. Consult our Plumbers Directory online at www.fixatap.com.au/find-a-plumber or via the QR code.



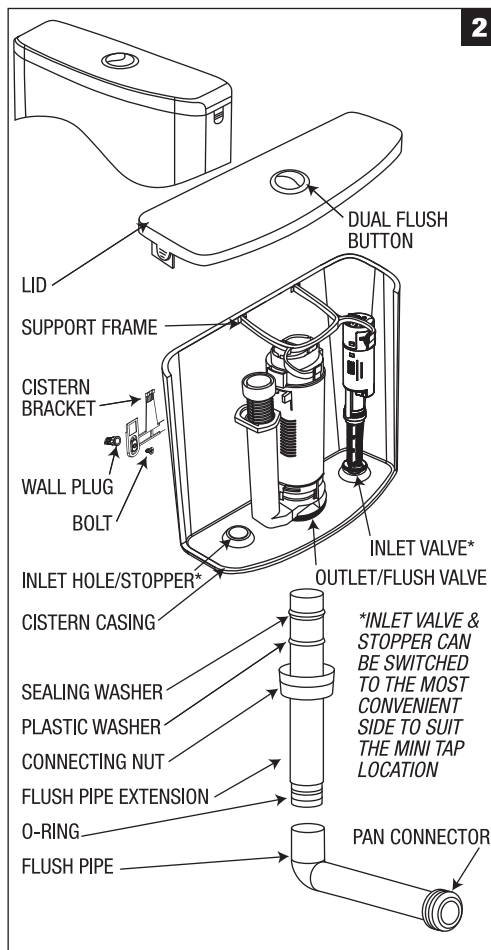
WELS Lic. 0128,
4.7L Full Flush,
3L Half Flush,
Average Flush 3.3L,
4 Stars.

Ensure the backflow prevention complies with AS/NZS 3500.1 requirements.

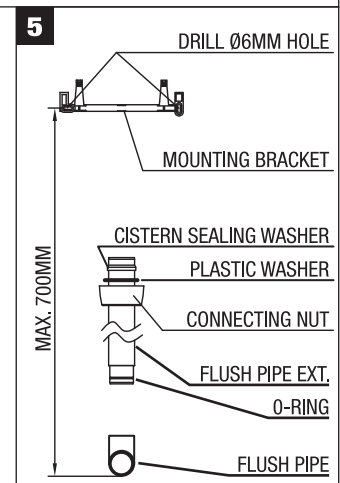
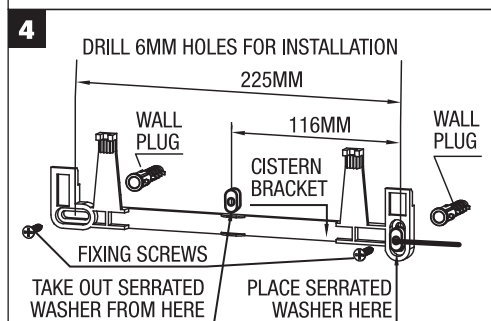
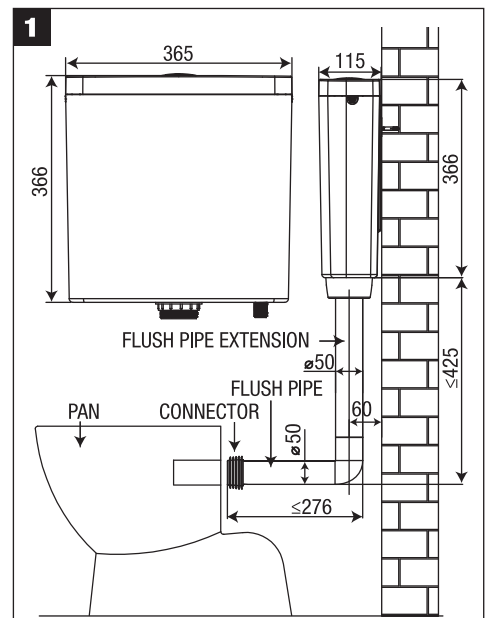
See fully labelled diagram, and read through all instructions prior to installing.

Do not use corrosive detergents or solvents containing chlorine or hypochlorite on the tank. Using these liquids can seriously damage the tank and its accessories, which may lead to leakage. Water pressure range: 0.02MPa - 0.8MPa. Working temperature range: 2°C to 45°C. Do not expose to hot objects.

INSTALLATION INSTRUCTIONS

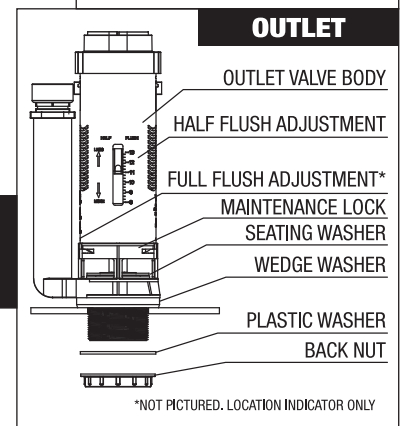


- Note cistern measurements in the diagram to the right, and establish where to hang your cistern. The flush pipes can be cut to suit your desired wall height and pan fitting.
- To open the cistern cover, press the button on the side of the cover and push up (see diagram on left).
- Attach the flush pipe in the horizontal position. Place the pan connector onto the end of the flush pipe, and insert into the back of the pan. Note: Cistern comes with 1 flush pipe extension for extended height if required. If the flush pipe is too long, cut it to the correct size before inserting it into the pan.
- To attach the cistern to the wall, establish the desired height (noting that there are approx. 27.5cm from the drill holes to the base of the cistern). Drill 6mm holes, then insert the wall plugs and attach the mounting bracket using the fixing screws and serrated washer.
- Connect nut and washers to the flush pipe.
- Hang the cistern securely onto the mounting rack and push the flush pipe into the base of the outlet valve within the cistern. The cistern can be levelled by adjusting the position of the mounting rack.
- With the cistern correctly positioned, tighten the connecting nut onto thread of the outlet valve.
- Flush the water supply lines, connect water supply and check operation of cistern.
- Fit the cistern lid, test push button operation and check for leaks.

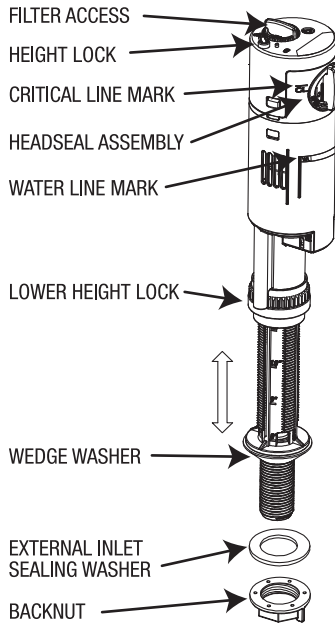


MAINTENANCE - SEATING WASHER REPLACEMENT (OUTLET VALVE)

To replace the outlet valve seating washer, turn off water, flush toilet, open the cistern, and rotate the cylindrical valve casing in an anti-clockwise direction to unlock the maintenance lock. The top part of the outlet valve can then easily be removed without the need to remove the flush pipe. Replace the seating washer, then reinstall the outlet valve, and lock into position by turning in a clockwise direction.



MAINTENANCE - HEADSEAL WASHER REPLACEMENT (INLET VALVE)



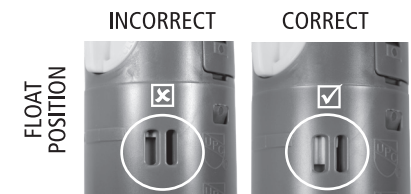
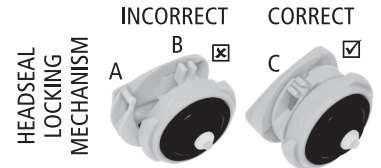
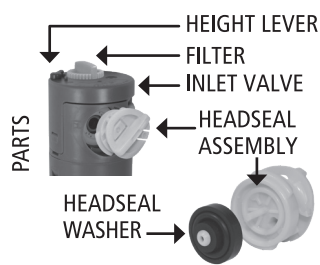
Turn off the water supply, remove cistern lid and flush toilet until empty.

Twist the yellow headseal assembly clockwise and remove from valve. The headseal washer is the black piece of rubber on the reverse side. Pull the black headseal washer out and replace by pushing the new washer on.

IMPORTANT: Before reinstalling, ensure the headseal locking mechanism is joined together. Click the bar labelled 'A' into the two prongs labelled 'B' as per the image shown right.

Insert the yellow headseal assembly into the inlet valve with the arrow pointing towards the point labelled 'D', then rotate anti-clockwise to tighten.

Check float position to ensure that the valve is correctly prepared, check that the red height lock lever is in the locked position, then turn on water supply and check for leaks.



TROUBLE SHOOTING

ISSUE	SUGGESTIONS
The inlet valve is on the wrong side for your mini tap	The cistern base has holes in both sides. To switch sides, remove the inlet stopper, uninstall the inlet valve and reinstall both on opposite sides. Ensure that the inlet stopper and inlet valve are properly secured to prevent leakage of water.
The water level in the cistern is too high or too low	The water level can be varied by adjusting the float level on the inlet valve. The inlet valve has a red lock lever on the top of the valve. Unlock and pull/push the valve to the correct position, then relock. Ensure the critical line on the inlet valve is 3cm above the overflow tube on the outlet valve.
Inlet valve fails to access water or water intake is slow	Ensure mini cistern tap and water source are fully turned on. If water is still not accessible, clean the filter located at the top of the valve. This can be accessed by twisting the orange filter cap anti-clockwise. Once opened, the white filter can be removed and cleaned. Reinsert with the oval shaped screen at the lower end, faced towards the headseal assembly. Screw on the filter cap and check for leaks.
Inlet Valve continues to fill cistern tank (doesn't shut off), water fills past critical line mark.	Check headseal locking mechanism arms are joined together correctly (refer to the above maintenance images relating to the head seal locking mechanism, correct headseal installation and float position).
External cistern leakage	Check both inlet and outlet valves are connected properly and tightened. Check that the wedge washers are sealing. Replace the wedge washer if required. Ensure that the water connector is in good condition and is adequately tightened.
Water continuously running into the pan	Check critical line of inlet valve, ensure that the critical line is always approximately 3cm above the overflow tube of the outlet valve. Check button flush prong is in the correct position and is not too long. Check that the seating washer is pushing against the base of the outlet valve. If problem persists, remove outlet valve and rinse thoroughly to clear any debris. Replace seating washer (see instructions overleaf), and sealing washer if required. Reinstall.
Inadequate draining when the button is pressed	The button prongs may be too short. Lengthen the prongs by unscrewing slightly to reduce the amount of thread in the button. Check that your water adjustment settings are correct. Replace the seating washer if necessary.
Water released is insufficient or excessive	Remove the outlet valve by twisting anticlockwise, then adjust the full & half flush by adjusting the blue levers located on the sides of the outlet valve.
The button is not working correctly	Ensure that the button prongs are correctly lined up with the flush panels.

PRODUCT WARRANTY

The product warranty runs for seven years from the date of purchase. Our products come with guarantees that cannot be excluded under the Australian Consumer Law. You are entitled to a replacement or refund for a major failure and for compensation for any other loss or damage. You are also entitled to have the goods repaired if the goods fail to be of acceptable quality and the failure does not amount to a major failure.

WHAT IS COVERED: This warranty covers any defects in materials or workmanship with the exception of the reasons stated below. The warranty covers the product used in normal domestic use only.

WHAT IS NOT COVERED: This warranty does not cover wear and tear to working parts, misuse or abuse, or discolourations due to exposure to sunlight or cleaning chemicals. The warranty does not cover the rubber components such as the wedge washer, the flush pipe ring, the seating washer, the stepped washer or the pan connector. These rubber components are covered by a 12 month warranty and should be replaced periodically as they wear out. We recommend installation by a licensed plumber. Warranty may be void if the product is incorrectly installed.

CLAIM PROCEDURE: If you believe you have a legitimate claim, contact FIX-A-TAP® Australia via our website at www.fixatap.com.au to complete the warranty claim form. Alternatively you can contact our office on (02) 9476 7400. Any written correspondence should be sent to: FIX-A-TAP® Australia Pty Ltd, Units 1-2, 41 Leighton Place, Hornsby NSW 2077. Please keep your receipt for proof of purchase. Any expenses incurred in making the claim are the responsibility of the consumer.