

FIX-A-LOO



10 YEAR WARRANTY

This warranty runs for ten years from the date of purchase.

Our products come with guarantees that cannot be excluded under the Australian Consumer Law. You are entitled to a replacement or refund for a major failure and for compensation for any other loss or damage. You are also entitled to have the goods repaired if the goods fail to be of an acceptable quality and the failure does not amount to a major failure.

What is covered:

This warranty covers the product for domestic use only. The warranty covers any defects in materials or workmanship with the exception of the reasons stated below.

What is not covered:

This warranty does not cover wear and tear to working parts, misuse or abuse. It does not cover discolourations due to exposure or cleaning chemicals.

Claim procedure:

If you believe you have a legitimate claim, please contact FIX-A-TAP Australia via our website at www.fixatap.com.au/warranty to complete the warranty claim form. Alternatively you can contact our office on 02 9476 7400.

Any written correspondence should be sent to:

FIX-A-TAP Australia Pty Ltd,
PO Box 200,
Wahroonga NSW 2076

Please keep your receipt for proof of purchase.

PLUMBCONNECT PLUMBERS REGISTRY

Need a plumber?

To find a plumber in your area, consult our PlumbConnect Registry using the QR code or via our website:

www.fixatap.com.au/find-a-plumber



FIX-A-TAP® AUSTRALIA PTY LTD
The Ultimate Plumbing Solution
PO Box 200 Wahroonga NSW 2076
www.fixatap.com.au
Made in China
© 2021 FIX-A-TAP



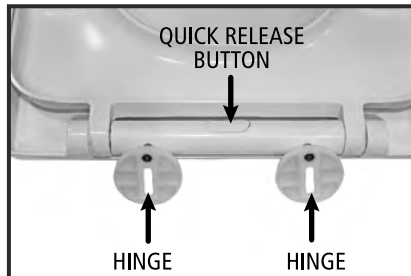
HYGENIX®

PREMIER

SOFT CLOSE TOILET SEAT

CODE: 245496

INSTALLATION INSTRUCTIONS

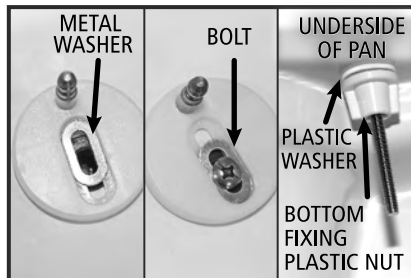


1. Press 'quick release' button to release hinges. Remove hinges from seat.



2. (Skip this step for bottom fixing).

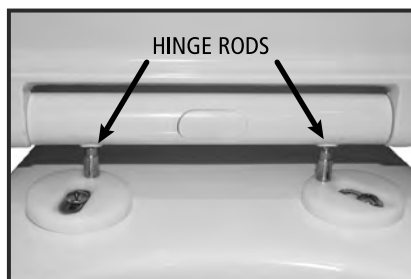
If you would like to top fix the seat, push the rubber nuts through your pan holes with the wider flat side up. If struggling to push through, use the bolt to push the nut through the hole. The spherical design then holds the nut firmly from underneath the pan.



3. Place the metal washer into the indentation on the hinges, then place the bolt through the hole.

If top fixing this bolt can be fastened from above using a Philips head screwdriver.

If bottom fixing, add the plastic washer and loosely screw on the plastic bolt from underneath the pan.



4. Move the hinge rods into place to align with the holes on the toilet seat. Fit seat to hinges, then adjust the positioning of the seat to the desired pan location.

If bottom fixing, tighten nuts from below.



5. Remove seat by pressing the 'quick release' button (as in step 1).

If top fixing, tighten the bolts from above with a screwdriver.

Place stainless steel covers over hinges and refit seat.

MAINTENANCE CLEANING INSTRUCTIONS

Clean with warm soapy water or a household detergent using a soft cloth or sponge. Do not use bleach or a harsh chemical based cleaner. Do not use a scourer as this may damage the finish.