

# FIX-A-LOO



## 5 YEAR WARRANTY

This warranty runs for five years from the date of purchase.

Our products come with guarantees that cannot be excluded under the Australian Consumer Law. You are entitled to a replacement or refund for a major failure and for compensation for any other loss or damage. You are also entitled to have the goods repaired if the goods fail to be of an acceptable quality and the failure does not amount to a major failure.

#### What is covered:

This warranty covers the product for domestic use only. The warranty covers any defects in materials or workmanship with the exception of the reasons stated below.

#### What is not covered:

This warranty does not cover wear and tear to working parts, misuse or abuse. It does not cover discolourations due to exposure or cleaning chemicals.

#### Claim procedure:

If you believe you have a legitimate claim, please contact FIX-A-TAP Australia via our website at [www.fixatap.com.au/warranty](http://www.fixatap.com.au/warranty) to complete the warranty claim form. Alternatively you can contact our office on 02 9476 7400.

#### Any written correspondence should be sent to:

FIX-A-TAP Australia Pty Ltd,  
PO Box 200,  
Wahroonga NSW 2076

Please keep your receipt for proof of purchase.

## PLUMBCONNECT PLUMBERS REGISTRY

#### Need a plumber?

To find a plumber in your area, consult our PlumbConnect Registry using the QR code or via our website:

[www.fixatap.com.au/find-a-plumber](http://www.fixatap.com.au/find-a-plumber)



**FIX-A-TAP® AUSTRALIA PTY LTD**  
The Ultimate Plumbing Solution  
PO Box 200 Wahroonga NSW 2076  
[www.fixatap.com.au](http://www.fixatap.com.au)  
Made in China  
© 2021 FIX-A-TAP



A family  
owned  
Australian  
business

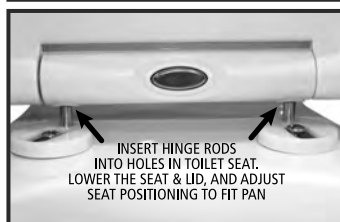
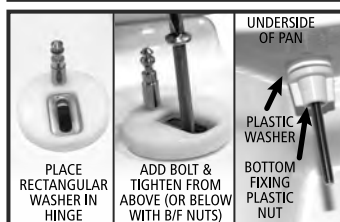
**Quality Assured Products**  
FIX-A-TAP has been providing Australians  
with quality plumbing products since 1972.

# HYGENIX® FAMILY

## SOFT CLOSE TOILET SEAT

CODE: 245489

## INSTALLATION INSTRUCTIONS



1. Press 'quick release' button to release hinges. Remove hinges from seat.
2. (Skip this step if bottom fixing).  
Push the nuts through your pan holes with the wider flat side up. If this is difficult, push through using the bolt. The spherical design holds the nut firmly from underneath the pan.
3. Place hinge over pan hole, and add the rectangular washer to the indentation on the hinge. Insert the bolt through the holes in the washer, hinge, and toilet pan.  
If top fixing, screw bolt from above with a screwdriver.  
If bottom fixing, add the white plastic washers and nuts to the bolts from underneath the pan holes.
4. Twist the hinges into place and insert the hinge rods into the holes in the toilet seat. Firmly press down. Lower the seat and lid, and adjust seat positioning to suit your pan.  
If bottom fixing, tighten the nuts to hold the seat firmly in place.
5. Press the 'quick release' button (as in step 1) to release the seat.  
If top fixing, tighten the bolts with a screwdriver to hold the seat firmly.  
Add stainless steel covers to the hinges and replace the seat.
6. When no longer required, gently pull the sides of the child seat away from the main seat hinge. The child seat can then be removed, leaving the adult seat still functioning.

## MAINTENANCE CLEANING INSTRUCTIONS

Clean with warm soapy water or a household detergent using a soft cloth or sponge. Do not use bleach or a harsh chemical based cleaner. Do not use a scourer as this may damage the finish.