

# FIX-A-LOO



## 10 YEAR WARRANTY

This warranty runs for ten years from the date of purchase.

Our products come with guarantees that cannot be excluded under the Australian Consumer Law. You are entitled to a replacement or refund for a major failure and for compensation for any other loss or damage. You are also entitled to have the goods repaired if the goods fail to be of an acceptable quality and the failure does not amount to a major failure.

### What is covered:

The warranty covers any defects in materials or workmanship with the exception of the reasons stated below.

### What is not covered:

This warranty does not cover wear and tear to working parts, misuse or abuse. It does not cover discolourations due to exposure or cleaning chemicals.

### Claim procedure:

If you believe you have a legitimate claim, please contact FIX-A-TAP Australia via our website at [www.fixatap.com.au/warranty](http://www.fixatap.com.au/warranty) to complete the warranty claim form. Alternatively you can contact our office on 02 9476 7400.

### Any written correspondence should be sent to:

FIX-A-TAP Australia Pty Ltd,  
PO Box 200,  
Wahroonga NSW 2076

Please keep your receipt for proof of purchase.

## PLUMBCONNECT PLUMBERS REGISTRY

### Need a plumber?

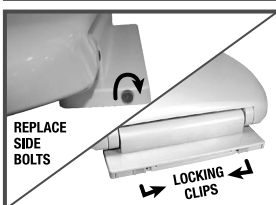
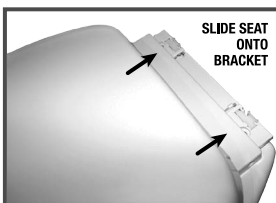
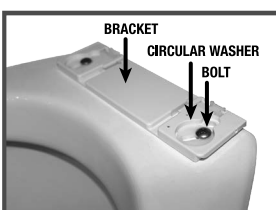
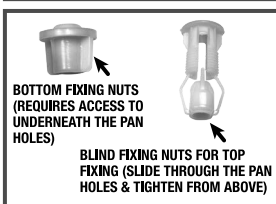
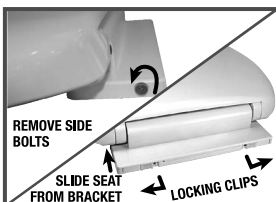
To find a plumber in your area, consult our PlumbConnect Registry using the QR code or via our website:  
[www.fixatap.com.au/find-a-plumber](http://www.fixatap.com.au/find-a-plumber)



# ANTI-VANDAL SOFT CLOSE TOILET SEAT

CODE: 235763

## INSTALLATION INSTRUCTIONS



1. Remove small side bolts with a Phillips head screwdriver, ensure locking clips are disengaged, and slide seat away from the bracket.

2. (Skip this step if bottom fixing).

If you cannot reach the underneath of your pan holes, use the blind-fixing nuts which slide through the pan holes from above, allowing the bolts to screw in without accessing the underside of the pan.

3. Position the bracket over the pan holes, and place the circular washers in the large bracket holes. Place the bolts into the pan holes.

If bottom fixing, the nut can be loosely added from underneath the pan holes.

If top fixing, the bolt can be tightened from above using a Philips head screwdriver.

4. Slide the seat onto the bracket. Adjust the seat and bracket location to fit your pan.

5. If bottom fixing, tighten the nut from below.

If top fixing, keep the bracket in the desired location, remove seat, tighten bolts firmly from above and replace seat.

6. Slide the locking clips inwards, then screw in the small bolts on the sides with a Phillips head screwdriver to secure the seat.

## MAINTENANCE CLEANING INSTRUCTIONS

Clean with warm soapy water or a household detergent using a soft cloth or sponge. Do not use bleach or a harsh chemical based cleaner. Do not use a scourer as this may damage the finish.

FIX-A-TAP® AUSTRALIA PTY LTD  
The Ultimate Plumbing Solution  
PO Box 200 Wahroonga NSW 2076  
[www.fixatap.com.au](http://www.fixatap.com.au)  
Made in China  
© 2021 FIX-A-TAP



A family owned Australian business

Quality Assured Products  
FIX-A-TAP has been providing Australians with quality plumbing products since 1972.